



MILWAUKEE VOLLEYBALL GAME NOTES

10 NCAA TOURNAMENTS | 14 CONFERENCE CHAMPIONSHIPS | 12 ALL-AMERICANS

MKEPanthers.com || @MKE_Volleyball || #ForTheMKE || Contact: Sean Engel || Email: engelsf@uwm.edu || Office: 414-435-8118

2024 SCHEDULE / RESULTS

Date	Opponent	TV	Time
August			
30	No. 5 STANFORD	ESPN+	L, 0-3
31	vs. Western Illinois		W, 3-1
September			
1	at Northern Illinois	ESPN+	W, 3-2
5	at Southern Methodist	ESPN+	L, 0-3
6	vs. Loyola Marymount		L, 1-3
7	vs. Weber State		W, 3-1
10	at No. 8 Wisconsin	BIG+	L, 0-3
13	ILLINOIS STATE	ESPN+	W, 3-2
14	ST. THOMAS (MINN.)	ESPN+	L, 0-3
15	IOWA	ESPN+	W, 3-1
19	at DePaul	FLOSPORTS	L, 0-3
21	vs. UIC		L, 1-3
27	at Oakland *	ESPN+	5:00 pm
28	at Oakland *		1:00 pm
October			
1	at Green Bay *	ESPN+	6:00 pm
4	IU INDIANAPOLIS *		6:00 pm
5	IU INDIANAPOLIS *		2:00 pm
11	at Northern Kentucky *		5:00 pm
12	at Northern Kentucky *		1:00 pm
18	WRIGHT STATE *	ESPN+	6:00 pm
19	WRIGHT STATE *	ESPN+	2:00 pm
22	at Marquette		7:00 pm
25	YOUNGSTOWN STATE *		6:00 pm
26	YOUNGSTOWN STATE *		2:00 pm
29	GREEN BAY *	ESPN+	6:00 pm
November			
1	at Purdue Fort Wayne *		6:00 pm
2	at Purdue Fort Wayne *		1:00 pm
8	at Robert Morris *		5:00 pm
9	at Robert Morris *		12:00 pm
15	CLEVELAND STATE *	ESPN+	6:00 pm
16	CLEVELAND STATE *	ESPN+	2:00 pm
22	Horizon Quarterfinals ^	ESPN+	TBA
23	Horizon Semifinals ^	ESPN+	TBA
24	Horizon Championship ^	ESPN+	TBA

*Horizon League Game | ^ Horizon Postseason
All times Central

HOME MATCHES IN BOLD

HOME BROADCAST INFORMATION

ESPN+ | ESPN App | @ESPNplus
Matt Menzl | @MMenzl

ESPN+ is offered at a price of \$10.99/month or \$109.99/year.
Fans can sign-up or cancel at anytime.

It is also available as part of a bundle offer that gives subscribers
access to Disney+, Hulu, and ESPN+ starting at \$14.99/month.

MILWAUKEE PANTHERS



2024 RECORD

5-7 Overall
0-0 Horizon

ALL-TIME RECORD (Div. I)

591-446 Overall
314-144 Conference

SUSIE JOHNSON

Career Record: 310-266
Record at MKE: 289-219

MATCH 13/14

SEPTEMBER 27 / 28 at OAKLAND

Athletics Center O'Rena | Rochester, Michigan | 5:00 pm / 1:00 pm | ESPN+ (Friday Only)



GOLDEN GRIZZLIES

4-8 Overall
0-0 Horizon

ALL-TIME SERIES

Milwaukee Leads, 15-9
Last Meeting: Nov. 11, 2023

KRISTA RICE

Career Record: 32-41
Record at Oakland: 32-41

QUICK HITS

» Milwaukee opens Horizon League play this week when the Panthers travel to Rochester, Michigan to take on the Oakland Golden Grizzlies. Oakland is 4-8 to begin the season, winning one of three this past weekend at the Ohio Invitational.

» The Panthers have won eight-straight matches against the Golden Grizzlies, including a pair of sweeps a year ago. Milwaukee won in Michigan, 3-0 and did the same at home later in the year on Nov. 11.

» MKE is 6-5 all-time in matches played at the Athletics Center O'Rena including 4-2 in their last six visits to suburban Detroit.

» Milwaukee took part in the 'Chicago Cup' this past weekend falling to DePaul in three sets on Sept. 19 and dropping a four-set match to UIC on Sept. 21.

» Madi Malone led Milwaukee with 21 kills last week while Bri Geurts had 17. Milica Tomic had 31 assists followed by Josie Johnson with 30. The Panthers had five service aces led by two from Tomic.

» Defensively, Kara Erdmann led the Panthers with 37 digs while Lakyn Graves, Madi Malone, and Rachel Scott each had three blocks apiece on the week.

» Excluding the Spring 2021 COVID season, Milwaukee has won every conference opener dating back to the 2018 season. MKE last opened the Horizon League schedule against Oakland in 2015, when the Panthers knocked off the Golden Grizzlies in five sets on Sept. 24.

» After visiting Oakland this weekend, Milwaukee returns to Wisconsin on Tuesday and visits Green Bay on Oct. 1 at the Kress Center. The Panthers will be home again on Friday, Oct. 4 and Saturday, Oct. 5 against the Jaguars of IU Indianapolis.

HEAD TO HEAD

CATEGORY	MILWAUKEE	OAKLAND
Kills (Team/Opp)	522/628	537/575
Errors (Team/Opp)	223/240	217/213
Attempts (Team/Opp)	1,714/1,725	1,578/1,577
Attacking Percent (Team/Opp)	.174/.225	.203/.230
Assists (Team/Opp)	465/582	491/528
Assists per Set (Team/Opp)	10.3/12.9	11.2/12.0
Service Aces (Team/Opp)	61/74	61/79
Digs (Team/Opp)	669/796	657/693
Total Blocks (Team/Opp)	80/96	72/81.5

**General Information**

Location	Milwaukee, Wis.
Founded	1885
Enrollment	24,836
Nickname	Panthers
Colors	Black and Gold
Facility / Capacity	Klotsche Center / 2,500
Affiliation	NCAA Division I
Conference	Horizon League
Chancellor	Mark Mone
Director of Athletics	Amanda Braun
Associate AD/SWA	Kathy Litzau
Ticket Office Phone	414-229-5886

Team History

First Year of Volleyball	1973
All-Time Record	1158-699-9
First Year in Division I	1990
NCAA Division I Record	591-446
NCAA Tournament Appearances	10
Last NCAA Appearance	2013
Last NCAA Opponent	Wisconsin
Result	L, 3-0

Volleyball Staff

Head Coach	Susie Johnson
	Idaho State '93
Office Phone	414-229-4483
Associate Head Coach	Lindsey Vanden Berg
	Milwaukee '03
Assistant Coach	Katie Adams
	Parkside '19
Athletic Trainer	Katie Wissing
	Saint Louis '21

Media Relations

Director of Athletic Communications	Sean Engel
Office/Cell Phone	414-435-8118
E-mail	engelsf@uwm.edu
Assistant AD Communications	Chris Zills
Communications Assistant	Chip Kindt
Content Creation & Strategy	Rachel Klemp
Multimedia Services	Andrew Levesque
Athletics Website	www.mkepanthers.com

2024 HORIZON LEAGUE STANDINGS

Team	Horizon League			Overall			Strk
	W	L	Pct.	W	L	Pct.	
Cleveland State	0	0	.000	9	2	.818	W5
Wright State	0	0	.000	8	3	.727	W1
Purdue Fort Wayne	0	0	.000	7	6	.538	W3
IU Indianapolis	0	0	.000	6	7	.462	W1
Robert Morris	0	0	.000	5	6	.455	W2
Youngstown State	0	0	.000	5	6	.455	W1
Milwaukee	0	0	.000	5	7	.417	L2
Northern Kentucky	0	0	.000	4	7	.364	W2
Oakland	0	0	.000	4	8	.333	W1
Green Bay	0	0	.000	3	9	.250	L3

AROUND THE HORIZON LEAGUE

Sept. 20	Liberty 3, Oakland 2
	Eastern Kentucky 3, Oakland 0
	Cleveland State 3, Akron 1
	Youngstown State 3, Kent State 0
	Ball State 3, Wright State 2
	Robert Morris 3, Canisius 0
	Purdue Fort Wayne 3, Saint Francis 1
	St. Thomas 3, Green Bay 2
	Purdue Fort Wayne 3, Indiana State 0
	Robert Morris 3, Central Michigan 1
Sept. 21	Oakland 3, Ohio 1
	North Dakota 3, Green Bay 0
	Wright State 3, Butler 0
	Northern Kentucky 3, Miami (Ohio) 0
	Southern Indiana 3, IU Indianapolis 0
Sept. 22	Purdue Fort Wayne 3, Eastern Michigan 0
	IU Indianapolis 3, Evansville 2
Sept. 27-28	Northern Kentucky at Cleveland State 5:00 pm/1:00 pm
	Green Bay at Youngstown State 5:00 pm/1:00 pm
	Wright State at IU Indianapolis 5:00 pm/2:00 pm
	Purdue Fort Wayne at Robert Morris 5:00 pm/1:00 pm
	Youngstown State at Robert Morris 5:00 pm
Oct. 1	Northern Kentucky at Wright State 5:00 pm
	Oakland at Cleveland State 5:00 pm
	IU Indianapolis at Purdue Fort Wayne 6:00 pm
Oct. 4-5	Youngstown State at Northern Kentucky 5:00 pm/2:00 pm
	Cleveland State at Wright State 5:00 pm/1:00 pm
	Robert Morris at Oakland 5:00 pm/1:00 pm
	Purdue Fort Wayne at Green Bay 6:00 pm/2:00 pm
	Robert Morris at IU Indianapolis 5:00 pm/1:00 pm
Oct. 11-12	Wright State at Youngstown State 5:00 pm/1:00 pm
	Green Bay at Cleveland State 5:00 pm/1:00 pm

IT'S "MILWAUKEE"

A lot has been made of the correct way to talk about the University of Wisconsin-Milwaukee, especially in the area of athletics. It would be appreciated if you would refer to the athletics teams as either "Milwaukee" or "MKE".

Milwaukee Athletics is making an effort to brand itself as "Milwaukee" instead of other references. Please avoid UW-Milwaukee, UW-M, Wisc.-Mil, UW-MIL, Wisconsin-Milwaukee, etc.

Your cooperation in this matter is greatly appreciated.

2024 HORIZON LEAGUE PRESEASON POLL

School (1st place votes)	Points
1. Wright State (9)	99
2. Northern Kentucky (1)	85
3. Milwaukee	73
4. Green Bay	71
5. Cleveland State	63
6. Oakland	53
7. Purdue Fort Wayne	38
T8. IU Indianapolis	26
T8. Robert Morris	26
10. Youngstown State	16

MILWAUKEE VOLLEYBALL ROSTER

No.	Name	Pos.	Ht.	Yr.	Hometown (High School/College)	Pronunciation
1	Tatum Catalano	OH/RS	6-0	Sr.	Germantown, Wis. (Germantown)	TAY-tum cat-uh-LAH-no
2	Bri Geurts	RS/MB	6-0	Sr.	De Pere, Wis. (De Pere)	GERTS
3	Lakyn Graves	MB	6-2	Sr.	Menomonee Falls, Wis. (Sussex Hamilton/Omaha)	LAY-kin
4	Josie Johnson	S	5-7	Jr.	Burlington, Wis. (Waterford Union)	
5	Milica Tomic	S	5-7	Fr.	Dyer, Ind. (Lake Central)	mil-LEET-za TOE-meech
6	Alexis Lewis	MB	6-1	Sr.	Roscoe, Ill. (Hononegah Community/Memphis)	
7	Gabby Wire	OH	5-9	Fr.	Crystal Lake, Ill. (Crystal Lake South)	
8	Jenna Soerens	OH/RS	5-11	Fr.	Oostburg, Wis. (Oostburg)	SOAR-ins
9	Kati Goba	DS	5-4	So.	Mukwonago, Wis. (Wisconsin Lutheran)	GOE-buh
10	Czhen Beneby	MB	6-3	Sr.	West Palm Beach, Fla. (Alexander W. Dreyfoos/Virginia)	ZEN BEN-uh-bee
11	Natalie Schmitz	OH	6-1	Jr.	Ham Lake, Minn. (Blaine)	
12	Bella Lipski	MB	6-2	So.	Milwaukee, Wis. (Divine Savior Holy Angels)	
13	Kara Erdmann	DS	5-6	Jr.	Forreston, Ill. (Forreston)	
14	Madi Malone	OH	6-0	Sr.	Newark, Ill. (Newark)	
15	Emily Hansen	OH/RS	5-10	Fr.	Mayville, Wis. (Mayville)	
16	Rachel Scott	RS	6-2	Jr.	Belvidere, Ill. (Belvidere North)	
17	Hallie Cook	DS/L	5-8	Jr.	Springfield, Mo. (Springfield Catholic/UNC Greensboro)	HAL-lee

Head Coach: Susie Johnson (18th season)**Associate Head Coach:** Lindsey Vanden Berg (18th season)**Assistant Coach:** Katie Adams (first season)**Athletic Trainer:** Katie Wissing (third season)**Strength & Conditioning:** Bennett Reed (second season)

TELEVISION/RADIO ROSTER



Tatum
Catalano



Bri
Geurts



Lakyn
Graves



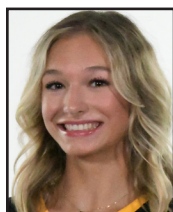
Josie
Johnson



Milica
Tomic



Alexis
Lewis



Gabby
Wire



Jenna
Soerens



Kati
Goba



Czhen
Beneby



Natalie
Schmitz



Bella
Lipski



Kara
Erdmann



Madi
Malone



Emily
Hansen



Rachel
Scott



Hallie
Cook



Susie
Johnson

TEAM BREAKDOWN

Class

Seniors – 6
Juniors – 5
Sophomores – 2
Freshmen – 4

Position

Hitters – 8
Middles – 4
Setters – 2
Defensive – 3

Home State

Wisconsin – 8
Illinois – 5
Florida – 1
Indiana – 1
Minnesota – 1
Missouri – 1

Height

6-2 Plus – 4
6-0 to 6-1 – 5
5-8 to 5-11 – 4
5-4 to 5-7 – 4

Status

Returners – 11
Freshmen – 4
Transfers – 2

GAME NOTES

LOOKING AT OAKLAND

Conference play opens for the Golden Grizzlies this week as they welcome the Panthers to the O'Rena before visiting Cleveland State to open the road half of league play on Tuesday. Oakland is 4-8 through the opening 12 games of non-conference play including wins over Hampton, Eastern Michigan, Saint Francis and Ohio.

Krysta Rice is in her third season as head coach and after winning 11 matches in her first season, improved to 17 victories a season ago, clinching a berth as the fifth seed in postseason play. The fifth seed was the program's highest bid in the league standing since the 2017 season, when the Golden Grizzlies were second in the Horizon League.

This year the team is being outthit by their opponents by 27 percentage points, with a .203 percentage offensive and a .230 hitting percentage by their competition. Christina Bohm leads all hitters with a .253 hitting percentage, at 70 kills through 12 matches. Tyler Linkhart has taken over 400 attempts this season and amassed 120 kills while Gentry Brown has 112 kills on the year.

Rachel Rossman has been the team's primary setter with 311 assists, but freshman Delaney Stern has added 111 to the offensive effort. Behind the service line, Linkhart leads the way with 16 aces, while Brown has a dozen and Rossman has added 10 thus far on the season.

After finishing fifth in the nation in 2023 in total digs, the Golden Grizzlies are looking to return to form but are currently seventh in the Horizon League and 108th nationally in total digs. Emily Wichmann is still in the top-50 nationally with 204 digs, but that number is only third in the league with Milwaukee's Kara Erdmann leading the way with 223 this season.

Senior Ainsley Guse is a force at the net with 42 blocks already on the season, that number is good enough for third best in the conference, behind Allana Appleby of Cleveland State and Azra Eric of Robert Morris.

UP NEXT

After the trip to Oakland this weekend, Milwaukee continues to Green Bay for a midweek matchup against the Phoenix on Tuesday evening at 6:00 p.m. at the Kress Center. Milwaukee finally returns home for its first matchup at the Klotsche Center since Sept. 15, as the Panthers will host the IU Indianapolis Jaguars on Oct. 4-5.

1,000 CAREER DIGS

During the team's win over Iowa, Milwaukee senior Madi Malone recorded the 1,000th dig of her career as she makes a push towards the top-10 in the program's Division I history in digs. Currently the 10th position is occupied by Sam Trawitzke, who finished her career following the 2011 season with 1,412 digs.

Malone had a career-high 319 digs in 2023, after 289 as a sophomore and 292 during her freshman campaign.

ERDMANN'S NEW HIGH

After setting a career-high with 31 digs against Western Illinois on Aug. 31 earlier this season, Kara Erdmann pushed right past that number with a 36-dig effort in the team's five-set win over Illinois State on Sept. 13.

The 36 digs tied the third highest dig total in a five-set match in program history. The mark equals Sarah Schrader's mark from 2023 and Myanna Ruiz, who had 36 in a five-setter in 2015. The program record for digs in a five-set match is 41 set by Becky Peters back in 2005.

Erdmann is currently 16th in the nation with 223 digs this season, which also places her 17th nationally in digs per set at 4.96 in 2024.

REVERSE SWEEP

On Sept. 13 against Illinois State, the Milwaukee volleyball team reverse swept the Redbirds with 25-20, 25-18, 15-7 set wins in the latter portion of the match.

Milwaukee had two reverse sweeps in 2023 with one coming in non-conference play against Air Force on Sept. 15 and another later in the year against Purdue Fort Wayne in Horizon League action on Oct. 20 in Indiana.

The Panthers did not have any reverse sweeps in 2022 and had two back in 2021 against Western Michigan on Sept. 17, and one on Oct. 1 against Wright State.

LEADING THE TEAM

While many teams rely on one to two hitters to lead their offense, Milwaukee has had five different student-athletes lead the Panthers in kills through the team's season thus far.

Madi Malone has led the team in kills on five occasions while Natalie Schmitz has led the team three times, Alexis Lewis and Bri Geurts have both led the team in kills on two occurrences this season. Rachel Scott has also led the team in kills once in 2024.

SERVING UP AN ACE

After collecting just three service aces in limited service action as a junior, Lakyn Graves has been the top servers for Milwaukee thus far with a team-best 17 service aces, which places her 17th in the Horizon League.

BUILDING BLOCKS

Milwaukee had a strong showing in the blocking game during two of their three matches of the 2024 Panther Invitational with the team tallying a season-high 14 against Illinois State on Sept. 13 and adding another 13 against Iowa two days later.

Against the Redbirds Lakyn Graves led the team with eight, followed by Alexis Lewis with six and Rachel Scott with four. Later in the weekend, Scott had a career-best with eight with Graves adding six and Bella Lipski getting in on the action with four blocks.

MALONE DOUBLING UP

With six double-doubles on the season, Madi Malone now has 42 double-doubles for her career.

Malone has 1,228 kills and is now in seventh on the Milwaukee all-time kills list, and is 25 behind the sixth position occupied by Chrissy Schurla with 1,253.

Her 1,025 digs is also the most among active players, as are her 106 matches played, 393 sets played, and 68 service aces.

RECORD-SETTING CROWD

On August 30, the Panthers hosted their first-ever top-five opponent with the Stanford Cardinal visiting the Klotsche Center. With a total of 1,581 in attendance, including a student crowd of 968, the attendance figure broke the previous mark that had stood since the 2006 season, when Milwaukee and No. 11 Wisconsin drew a crowd of 1,121 in the final match of that season's Panther Invitational.

500 CAREER MATCHES

On Sunday, September 1, Susie Johnson coached her 500th career match as the head coach of the Panthers becoming the first head coach in Milwaukee Division I history to reach that milestone. Tom Pleyte, who coached the team from 1978 and through Milwaukee's first three Division I seasons from

GAME NOTES

1990-92, is the program's all-time leader having served as head coach for 807 matches. Kathy Litzau, who followed Pleyte and preceded Johnson led Milwaukee 423 times.

Last season, Johnson earned her 272nd head coaching victory to become the department's all-time leader in wins in Division I history. She also recorded her 500th win as a Panther, earning 226 victories in 10 seasons as an assistant, while earning her 274th win as head coach against Purdue Fort Wayne on September 23.

NATIONAL RANKING

Milwaukee finished the 2023 regular season second in the nation with 1,608 kills, and after its postseason match against Cleveland State in the Horizon League First Round, added to its total to finish the year with 1,661, which was 22nd most in all of Division I in 2023 following the conclusion of the NCAA Championship.

The Panthers also finished 2023 with 1,546 assists, which was also 22nd in Division I, while the team finished 52nd in total blocks with 279.5. Both of those numbers were tops in the Horizon League. With a .255 team hitting percentage, Milwaukee led the Horizon League and finished the year 39th among 332 DI programs.

TOUGH SLATE ON TAP

Milwaukee is scheduled to play a tough slate of competition in 2024 including six teams that qualified for the 2023 NCAA Championship. The list includes Stanford (Aug. 30), Southern Methodist (Sept. 5), Weber State (Sept. 8), Wisconsin (Sept. 10), Wright State (Oct. 18-19), and Marquette (Oct. 22).

The 2024 American Volleyball Coaches Association Preseason Poll included Wisconsin (No. 3), Stanford (No. 5), Marquette (No. 24), as well as Southern Methodist and Loyola Marymount, who were receiving votes in the preseason tally.

PRESEASON POLL

After finishing the 2023 Horizon League schedule in a tie for second place with a 13-5 record, the Panthers were selected to finish third in the 2024 preseason poll, amassing 73 points and finishing just ahead of Green Bay with 71 points.

Wright State was selected to repeat as champions of the Horizon League with nine first-place votes and 99 points overall, while Northern Kentucky received the final first-place vote and recorded 85 points. Cleveland State took fifth with 63 points, while Oakland was projected to take the final playoff berth with 53 points.



SUSIE JOHNSON

HEAD COACH

18TH SEASON / 28TH OVERALL

IDAHO STATE '93

Head Coaching Records

Head Coaching Record at Milwaukee: 290-219
Head Coaching Conference Record at Milwaukee: 181-89
Head Coaching Career Record: 310-266

Career Coaching Records

Total Career Record at Milwaukee: 516-289
Total Career Conference Record at Milwaukee: 299-103
Total Career Record: 561-372

Postseason Appearances / Awards

NCAA Tournament Berths: 10 *
20-Win Seasons: 16 *
Regular Season Titles: 14 *
League Coach of the Year Titles: 5 *

Coaching Timeline

2007-present - Milwaukee, Head Coach *
1997-2006 - Milwaukee, Assistant Coach *
1995-96 - Indiana State, Assistant Coach
1993-94 - Parkside, Head Coach

Panthers Record When ...

At Home	2-2
On the Road	1-3
At a Neutral Site	2-2
vs. Horizon	0-0
In Three-Set Matches	0-5
In Four-Set Matches	3-2
In Five-Set Matches	2-0
Winning the First Set	2-2
Leading After Two Sets	1-0
Trailing After Two Sets	1-3
Tied After Two Sets	3-2
On Weekdays	1-5
On Weekends	4-2
On Mondays	0-0
On Tuesdays	0-1
On Wednesdays	0-0
On Thursdays	0-2
On Fridays	1-2
On Saturdays	2-2
On Sundays	2-0
In August	1-1
In September	4-6
In October	0-0
In November	0-0

2024 SCHEDULE AND RESULTS

Date	Opponent	Score	Set-by-Set	Overall	Horizon	Time	Att.
Aug. 30	No. 5 Stanford	L, 0-3	20-25, 25-27, 17-25	0-1		1:29	1,581

NORTHERN ILLINOIS TOURNAMENT (DeKalb, Ill.)

Aug. 31	vs. Western Illinois	W, 3-1	25-23, 22-25, 28-26, 25-23	1-1		2:26	104
Sept. 1	at Northern Illinois	W, 3-2	22-25, 25-18, 19-25, 25-19, 15-13	2-1		2:18	401

SOUTHERN METHODIST TOURNAMENT (Dallas, Texas)

Sept. 5	at RV Southern Methodist	L, 0-3	12-25, 20-25, 12-25	2-2		1:17	217
Sept. 6	vs. Loyola Marymount	L, 1-3	25-12, 21-25, 15-25, 19-25	2-3		1:51	450
Sept. 7	vs. Weber State	W, 3-1	25-27, 25-20, 25-21, 25-13	3-3		1:59	150
Sept. 10	at Wisconsin	L, 0-3	13-25, 13-25, 14-25	3-4		1:16	7,096

PANTHER INVITATIONAL (Milwaukee, Wis.)

Sept. 13	ILLINOIS STATE	W, 3-2	21-25, 22-25, 25-20, 25-18, 15-7	4-4		2:25	503
Sept. 14	ST. THOMAS	L, 0-3	21-25, 22-25, 16-25	4-5		1:20	459
Sept. 15	IOWA	W, 3-1	25-21, 26-24, 23-25, 26-24	5-5		2:06	411

CHICAGO CUP (Chicago, Ill.)

Sept. 19	at DePaul	L, 0-3	19-25, 18-25, 21-25	5-6		1:21	512
Sept. 21	vs. UIC	L, 1-3	25-21, 22-25, 16-25, 15-25	5-7		2:01	193

Sept. 27	at Oakland *					5:00 pm	
Sept. 28	at Oakland *					1:00 pm	

Oct. 1	at Green Bay *					6:00 pm	
Oct. 4	IU INDIANAPOLIS *					6:00 pm	
Oct. 5	IU INDIANAPOLIS *					2:00 pm	
Oct. 11	at Northern Kentucky *					5:00 pm	
Oct. 12	at Northern Kentucky *					1:00 pm	
Oct. 18	WRIGHT STATE *					6:00 pm	
Oct. 19	WRIGHT STATE *					2:00 pm	
Oct. 22	at Marquette					7:00 pm	
Oct. 25	YOUNGSTOWN STATE *					6:00 pm	
Oct. 26	YOUNGSTOWN STATE *					2:00 pm	
Oct. 29	GREEN BAY *					6:00 pm	

Nov. 1	at Purdue Fort Wayne *					6:00 pm	
Nov. 2	at Purdue Fort Wayne *					1:00 pm	
Nov. 8	at Robert Morris *					5:00 pm	
Nov. 9	at Robert Morris *					12:00 pm	
Nov. 15	CLEVELAND STATE *					6:00 pm	
Nov. 16	CLEVELAND STATE *					2:00 pm	

HORIZON LEAGUE CHAMPIONSHIP

Nov. 22-24	Horizon League Tournament ^						
------------	-----------------------------	--	--	--	--	--	--

Home Games in **BOLD** | * Horizon League Match | ^ Horizon League Tournament



2024 MILWAUKEE MATCH-BY-MATCH

Date	Opponent	SP	Attack				Set			Serve				Recept			DIG	Blocking				BHE	POINTS	SCORE
			K	E	TA	PCT	A	TA	PCT	SA	SE	TA	PCT	RE	TA	PCT		BS	BA	BE	TOTAL			
08/30/2024	Stanford	3	29	15	79	.177	28	85	.329	5	6	63	.905	7	60	.883	32	1	8	0	5.0	0	39.0	0-3
08/31/2024	vs Western Ill.	4	55	16	228	.171	42	236	.178	9	10	99	.899	4	94	.957	91	5	14	0	12.0	0	76.0	3-1
09/01/2024	at NIU	5	58	19	183	.213	49	192	.255	6	10	105	.905	10	93	.892	77	1	10	0	6.0	2	70.0	3-2
09/05/2024	at SMU	3	23	13	68	.147	21	66	.318	2	9	46	.804	8	63	.873	10	0	4	2	2.0	0	27.0	0-3
09/06/2024	vs LMU (CA)	4	44	22	123	.179	39	114	.342	5	3	81	.963	7	78	.910	37	1	16	1	9.0	0	58.0	1-3
09/07/2024	vs Weber St.	4	54	18	162	.222	47	155	.303	6	9	99	.909	5	69	.928	76	0	14	1	7.0	0	67.0	3-1
09/10/2024	at Wisconsin	3	20	15	102	.049	19	105	.181	3	3	42	.929	8	68	.882	27	1	2	0	2.0	0	25.0	0-3
09/13/2024	Illinois St.	5	56	19	175	.211	51	175	.291	10	11	108	.898	3	88	.966	84	4	20	2	14.0	0	80.0	3-2
09/14/2024	St. Thomas (MN)	3	42	10	111	.288	42	111	.378	2	4	61	.934	9	68	.868	47	1	2	1	2.0	0	46.0	0-3
09/15/2024	Iowa	4	60	22	189	.201	50	169	.296	8	1	99	.990	4	92	.957	80	3	20	1	13.0	0	81.0	3-1
09/19/2024	at DePaul	3	34	20	124	.113	30	124	.242	4	5	59	.915	5	69	.928	33	1	0	0	1.0	0	39.0	0-3
09/21/2024	vs UIC	4	47	34	170	.076	47	175	.269	1	11	79	.861	4	88	.955	75	3	8	0	7.0	0	55.0	1-3
Totals		45	522	223	1714	.174	465	1707	.272	61	82	941	.913	74	930	.920	669	21	118	8	80.0	2	663.0	
Opponents		45	628	240	1725	.225	582	1778	.327	74	91	1021	.911	61	859	.929	796	33	126	12	96.0	1	798.0	

Team Averages

Sets Played	Kills per set	Assists per set	Service aces per set	Digs per set	Blocks per set	Points per set	Ball handling error per set	Reception errors per set
45	11.60	10.33	1.36	14.87	1.78	14.73	0.04	1.64

ACTIVE CAREER LEADERS

Matches Played

Madi Malone	106
Bri Geurts	94
Josie Johnson	75
Natalie Schmitz	75

Consecutive Matches Played

Madi Malone	106
Josie Johnson	72
Natalie Schmitz	72

Sets Played

Madi Malone	393
Bri Geurts	332
Josie Johnson	278
Natalie Schmitz	278

Kills

Madi Malone	1,228
Natalie Schmitz	754
Bri Geurts	473

Double-Figure Kills

Madi Malone	64
Natalie Schmitz	40
Bri Geurts	12

Digs

Madi Malone	1,025
Kara Erdmann	647
Josie Johnson	431

Double-Figure Digs

Madi Malone	54
Kara Erdmann	27
Josie Johnson	9
Kati Goba	9

Total Blocks

Bri Guerts	184
Lakyn Graves	164*
Czhen Beneby	135*
Madi Malone	115

* - Milwaukee Statistics Only

Assists

Josie Johnson	1,379
Milica Tomic	178
Kara Erdmann	114

Double-Doubles

Madi Malone	42
Josie Johnson	9
Milica Tomic	3

Service Aces

Madi Malone	68
Josie Johnson	45
Natalie Schmitz	35

2024 OVERALL STATISTICS

#	Player	SP	Attack					Set		Serve				Dig			Blocking					PTS
			K	K/S	E	TA	PCT	A	A/S	SA	SE	SA/S	RE	DIG	DIG/S	BS	BA	TOT/S	BLK/S	BE	BHE	
2	Geurts, Bri	44	82	1.86	36	223	.206	3	0.07	0	0	0.00	0	22	0.50	0	14	14	0.32	5	0	89.0
3	Graves, Lakyn	45	77	1.71	33	199	.221	4	0.09	17	21	0.38	0	24	0.53	8	29	37	0.82	0	0	116.5
4	Johnson, Josie	45	11	0.24	0	60	.183	217	4.82	9	12	0.20	0	58	1.29	0	0	0	0.00	0	1	20.0
5	Tomic, Milica	45	3	0.07	0	31	.097	178	3.96	7	11	0.16	0	80	1.78	0	0	0	0.00	0	1	10.0
6	Lewis, Alexis	44	61	1.39	36	174	.144	0	0.00	0	0	0.00	0	5	0.11	5	25	30	0.68	1	0	78.5
7	Wire, Gabby	1	0	0.00	0	0	.000	0	0.00	0	0	0.00	0	0	0.00	0	0	0	0.00	0	0	0.0
9	Goba, Kati	45	0	0.00	1	14	-.071	18	0.40	1	5	0.02	16	75	1.67	0	0	0	0.00	0	0	1.0
10	Beneby, Czhen	1	1	1.00	2	4	-.250	0	0.00	0	0	0.00	0	0	0.00	0	1	1	1.00	0	0	1.5
11	Schmitz, Natalie	45	122	2.71	51	425	.167	2	0.04	11	15	0.24	9	34	0.76	2	9	11	0.24	0	0	139.5
12	Lipski, Bella	5	3	0.60	3	11	.000	0	0.00	0	0	0.00	0	0	0.00	0	5	5	1.00	2	0	5.5
13	Erdmann, Kara	45	1	0.02	0	11	.091	34	0.76	4	1	0.09	10	223	4.96	0	0	0	0.00	0	0	5.0
14	Malone, Madi	45	123	2.73	45	396	.197	4	0.09	10	9	0.22	22	125	2.78	2	7	9	0.20	0	0	138.5
15	Hansen, Emily	6	2	0.33	4	9	-.222	0	0.00	0	0	0.00	0	1	0.17	0	1	1	0.17	0	0	2.5
16	Scott, Rachel	43	36	0.84	12	157	.153	3	0.07	0	0	0.00	0	16	0.37	4	27	31	0.72	0	0	53.5
17	Cook, Hallie	31	0	0.00	0	0	.000	2	0.06	2	8	0.06	0	6	0.19	0	0	0	0.00	0	0	2.0
MILWAUKEE		45	522	11.60	223	1714	.174	465	10.33	61	82	1.36	74	669	14.87	21	118	80	1.78	8	2	663.0
Opponents		45	628	13.96	240	1725	.225	582	12.93	74	91	1.64	61	796	17.69	33	126	96	2.13	12	1	798.0

FINAL 2023 HORIZON LEAGUE STATISTICS

#	Player	SP	MP-MS	Attack					Set				Serve				
				K	K/S	E	TA	PCT	A	A/S	TA	PCT	SA	SA/S	SE	TA	PCT
2	Geurts, Bri	54	15-3	54	1.00	27	146	.185	3	0.06	17	.176	0	0.00	0	3	1.000
3	Graves, Lakyn	67	18-18	101	1.51	35	225	.293	4	0.06	20	.200	0	0.00	2	2	.000
4	Johnson, Josie	67	18-15	12	0.18	4	41	.195	328	4.90	893	.367	15	0.22	15	250	.940
6	Miller, Ari	67	18-18	194	2.90	48	408	.358	9	0.13	35	.257	16	0.24	20	225	.911
8	Blake, Kaley	67	18-3	4	0.06	1	25	.120	364	5.43	832	.438	17	0.25	9	256	.965
9	Goba, Kati	28	10-1	2	0.07	0	5	.400	34	1.21	94	.362	3	0.11	5	84	.940
10	Beneby, Czhen	35	10-9	59	1.69	28	126	.246	0	0.00	12	.000	0	0.00	0	0	.000
11	Schmitz, Natalie	67	18-7	182	2.72	65	522	.224	2	0.03	26	.077	7	0.10	7	80	.913
12	Lipski, Bella	24	7-3	11	0.46	7	33	.121	0	0.00	5	.000	0	0.00	0	0	.000
13	Erdmann, Kara	41	14-1	0	0.00	1	3	-.333	22	0.54	98	.224	1	0.02	3	82	.963
14	Malone, Madi	67	18-18	253	3.78	64	640	.295	12	0.18	68	.176	21	0.31	10	267	.963
15	Schrader, Sarah	67	18-10	1	0.01	6	19	-.263	53	0.79	141	.376	23	0.34	15	279	.946
16	Scott, Rachel	25	8-2	22	0.88	7	63	.238	4	0.16	14	.286	0	0.00	0	0	.000
17	Jakscht, Mati	2	1-0	0	0.00	0	1	.000	0	0.00	3	.000	0	0.00	0	0	.000
MILWAUKEE		67	18-18	895	13.36	293	2257	.267	835	12.46	2258	.370	103	1.54	86	1528	.944
Opponents		67	18-18	851	12.70	388	2393	.193	808	12.06	2419	.334	109	1.63	124	1377	.910

2024 SEASON BESTS

ATTACK PERCENTAGE (min. 10 kills)

Team: .288 vs. St. Thomas (Sept. 14)
 Individual: .333 (Graves) vs. Illinois State (Sept. 13)
 Opponent: .515 at SMU (Sept. 5)

KILLS

Team: 60 vs. Iowa (Sept. 15)
 Individual: 18 (Malone) Twice
 Opponent: 67 vs. Iowa (Sept. 15)

ASSISTS

Team: 51 vs. Illinois State (Sept. 13)
 Individual: 26 (Johnson) vs. Illinois State (Sept. 13)
 Opponent: 63 vs. Iowa (Sept. 15)

DIGS

Team: 91 vs. Western Illinois (Aug. 31)
 Individual: 36 (Erdmann) vs. Illinois State (Sept. 13)
 Opponent: 113 vs. Western Illinois (Aug. 31)

SERVICE ACES

Team: 10 vs. Illinois State (Sept. 13)
 Individual: 4 (Schmitz) vs. Weber State (Sept. 7)
 Opponent: 10 at Northern Illinois (Sept. 1)

TOTAL BLOCKS

Team: 14 vs. Illinois State (Sept. 13)
 Individual: 8 (Graves & Scott) Once Each
 Opponent: 17 vs. UIC (Sept. 21)

2024 SEASON & CAREER HIGHS

1 Tatum Catalano | Sr. | OH/RS**2024 Season Highs**

Kills	n/a
Attempts	n/a
Hitting %	n/a
Blocks	n/a
Digs	n/a
Aces	n/a
Assists	n/a

Career Highs

Kills	4 (Twice)
Attempts	12 (9/9/22 vs. LSU)
Hitting % ..	1.000 [1-0-1] (10/7/22 vs. CSU)
Blocks	4 (Twice)
Digs	4 (10/8/22 vs. OAK)
Aces	same
Assists	1 (Twice)

4 Josie Johnson | Jr. | S**2024 Season Highs**

Kills	3 (8/31 vs. Western Ill.)
Attempts	16 (8/31 vs. Western Ill.)
Hitting %	1.000 (8/30 vs. Stanford)
Blocks	n/a
Digs	11 (9/13 vs. Illinois State)
Aces	3 (9/13 vs. Illinois State)
Assists	26 (9/13 vs. Illinois State)

Career Highs

Kills	3 (Three Times)
Attempts	same
Hitting % ...	1.000 [2-0-2] (10/13/23 at Oak.)
Blocks	1 (Three Times)
Digs	16 (9/15/23 vs. Air Force)
Aces	3 (Twice)
Assists	32 (9/8/23 vs. Western Illinois)

7 Gabby Wire | Fr. | OH**2024 Season Highs**

Kills	n/a
Attempts	n/a
Hitting %	n/a
Blocks	n/a
Digs	n/a
Aces	n/a
Assists	n/a

Career Highs

Kills	same
Attempts	same
Hitting %	same
Blocks	same
Digs	same
Aces	same
Assists	same

2 Bri Geurts | Sr. | RS/MB**2024 Season Highs**

Kills	11 (Twice)
Attempts	28 (9/13 vs. Illinois State)
Hitting %500 (9/14 vs. St. Thomas)
Blocks	3 (Twice)
Digs	6 (8/31 vs. Western Ill.)
Aces	n/a
Assists	2 (9/13 vs. Illinois State)

Career Highs

Kills	15 (9/8/23 vs. Western Illinois)
Attempts	30 (9/17/22 vs. New Mexico St.)
Hitting %750 [3-0-4] (Twice)
Blocks	9 (10/8/22 vs. Oakland)
Digs	6 (Three Times)
Aces	2 (Five Times)
Assists	3 (Twice)

5 Milica Tomic | Fr. | S**2024 Season Highs**

Kills	2 (9/21 vs. UIC)
Attempts	15 (8/31 vs. Western Ill.)
Hitting %667 (9/21 vs. UIC)
Blocks	n/a
Digs	12 (9/13 vs. Illinois State)
Aces	2 (9/15 vs. Iowa)
Assists	23 (9/15 vs. Iowa)

Career Highs

Kills	same
Attempts	same
Hitting %	same
Blocks	same
Digs	same
Aces	same
Assists	same

8 Jenna Soerens | Fr. | OH/RS**2024 Season Highs**

Kills	n/a
Attempts	n/a
Hitting %	n/a
Blocks	n/a
Digs	n/a
Aces	n/a
Assists	n/a

Career Highs

Kills	same
Attempts	same
Hitting %	same
Blocks	same
Digs	same
Aces	same
Assists	same

3 Lakyn Graves | Sr. | MB**2024 Season Highs**

Kills	12 (9/13 vs. Illinois State)
Attempts	30 (8/31 vs. Western Ill.)
Hitting %500 (9/14 vs. St. Thomas)
Blocks	8 (9/13 vs. Illinois State)
Digs	4 (Twice)
Aces	3 (Four Times)
Assists	1 (Four Times)

Career Highs

Kills	same
Attempts	30 (Twice)
Hitting %625 [5-0-8] (9/12/23 vs. DePaul)
Blocks	13 (9/3/21 vs. Arizona State)
Digs	6 (8/25/23 at West. Michigan)
Aces	same
Assists	1 (Eight Times)

6 Alexis Lewis | Sr. | MB**2024 Season Highs**

Kills	10 (9/6 vs. LMU)
Attempts	24 (9/7 vs. Weber State)
Hitting %429 [4-1-7] (8/30 vs. Stanford)
Blocks	7 (9/6 vs. LMU)
Digs	2 (9/21 vs. UIC)
Aces	n/a
Assists	n/a

Career Highs

Kills	14 (10/8/21 vs. Wichita St.)
Attempts	35 (10/15/21 at Tulane)
Hitting %	1.000 [1-0-1] (Twice)
Blocks	same
Digs	6 (9/3/22 at TCU)
Aces	1 (8/27/22 vs. East. Washington)
Assists	1 (Four Times)

9 Kati Goba | So. | L/DS**2024 Season Highs**

Kills	n/a
Attempts	4 (8/31 vs. Western Ill.)
Hitting %	n/a
Blocks	n/a
Digs	13 (8/31 vs. Western Ill.)
Aces	1 (9/19 at DePaul)
Assists	3 (Three Times)

Career Highs

Kills	1 (Twice)
Attempts	same
Hitting %	1.000 [1-0-1] (10/27/23 vs. YSU)
Blocks	1 (9/1/23 vs. Mont. St.)
Digs	16 (11/10/23 vs. Cleveland State)
Aces	1 (Four Times)
Assists	8 (10/28/23 vs. Robert Morris)

2024 SEASON & CAREER HIGHS

10 Czhen Beneby | Sr. | MB/RS**2024 Season Highs**

Kills 1 (9/21 vs. UIC)
 Attempts 4 (9/21 vs. UIC)
 Hitting % n/a
 Blocks 1 (9/21 vs. UIC)
 Digs n/a
 Aces n/a
 Assists n/a

Career Highs

Kills 15 (11/1/22 vs. PFW)
 Attempts 26 (11/5/22 at CSU)
 Hitting % .. .800 [8-0-10] (9/23/22 vs. YSU)
 Blocks 6 (Four Times)
 Digs 5 (10/22 at YSU)
 Aces same
 Assists 1 (Four Times)

13 Kara Erdmann | Jr. | DS**2024 Season Highs**

Kills 1 (9/7 vs. Weber State)
 Attempts 5 (Twice)
 Hitting % 1.000 (9/7 vs. Weber State)
 Blocks n/a
 Digs 36 (9/13 vs. Illinois State)
 Aces 2 (9/15 vs. Iowa)
 Assists 6 (9/7 vs. Weber State)

Career Highs

Kills 1 (Three Times)
 Attempts same
 Hitting % 1.000 [1-0-1] (Three Times)
 Blocks same
 Digs same
 Aces 2 (Twice)
 Assists 6 (Twice)

16 Rachel Scott | Jr. | RS**2024 Season Highs**

Kills 7 (9/19 at DePaul)
 Attempts 26 (9/15 vs. Iowa)
 Hitting %429 (9/1 at Northern Ill.)
 Blocks 8 (9/15 vs. Iowa)
 Digs 3 (9/7 vs. Weber State)
 Aces n/a
 Assists 1 (Twice)

Career Highs

Kills 9 (9/23/23 vs. PFW)
 Attempts 15 (9/23/23 vs. PFW)
 Hitting % . .750 [3-0-4] (9/22/23 vs. IUPUI)
 Blocks same
 Digs 6 (9/29/23 at Robert Morris)
 Aces same
 Assists 2 (Twice)

11 Natalie Schmitz | Jr. | OH**2024 Season Highs**

Kills 17 (Twice)
 Attempts 52 (8/31 vs. Western Ill.)
 Hitting %327 [17-1-49] (9/7 vs. Weber St.)
 Blocks 3 (9/6 vs. LMU)
 Digs 7 (Twice)
 Aces 4 (9/7 vs. Weber State)
 Assists 1 (Twice)

Career Highs

Kills 17 (Six Times)
 Attempts .. 54 (9/8/23 vs. Western Illinois)
 Hitting % .647 [11-0-17] (10/28/23 vs. RMU)
 Blocks 4 (Four Times)
 Digs 8 (10/6/23 vs Northern Ky.)
 Aces same
 Assists 2 (9/12/23 vs. DePaul)

14 Madi Malone | Sr. | OH**2024 Season Highs**

Kills 18 (Twice)
 Attempts 52 (8/31 vs. Western Ill.)
 Hitting %348 (9/14 vs. St. Thomas)
 Blocks 3 (9/21 vs. UIC)
 Digs 21 (9/7 vs. Weber State)
 Aces 3 (8/31 vs. Western Ill.)
 Assists 2 (Twice)

Career Highs

Kills 29 (10/1/21 vs. WSU)
 Attempts 66 (10/1/21 vs. WSU)
 Hitting % .467 [9-2-15] (9/11/21 at C-Ark)
 Blocks 4 (9/1/23 vs. Cal. Baptist)
 Digs same
 Aces 6 (10/27/23 vs. Youngstown St.)
 Assists 3 (Four Times)

17 Hallie Cook | Jr. | DS/L**2024 Season Highs**

Kills n/a
 Attempts n/a
 Hitting % n/a
 Blocks n/a
 Digs 2 (9/14 vs. St. Thomas)
 Aces 1 (Twice)
 Assists 1 (Twice)

Career Highs

Kills 16 (9/30 vs. Chattanooga)
 Attempts 48 (9/30 vs. Chattanooga)
 Hitting % . .500 [3-1-4] (9/22/22 vs. SC St.)
 Blocks 3 (9/16 vs. UNC Asheville)
 Digs 13 (Twice)
 Aces 2 (Five Times)
 Assists 2 (Twice)

12 Bella Lipski | So. | MB**2024 Season Highs**

Kills 3 (9/15 vs. Iowa)
 Attempts 8 (9/15 vs. Iowa)
 Hitting %125 (9/15 vs. Iowa)
 Blocks 4 (9/15 vs. Iowa)
 Digs n/a
 Aces n/a
 Assists n/a

Career Highs

Kills 4 (10/27/23 vs. Youngstown St.)
 Attempts 8 (Twice)
 Hitting % .. .500 [4-0-8] (10/27/23 vs. YSU)
 Blocks 5 (10/21/23 at IUPUI)
 Digs 2 (10/21/23 at IUPUI)
 Aces same
 Assists same

15 Emily Hansen | Fr. | OH/RS**2024 Season Highs**

Kills 1 (Twice)
 Attempts 4 (Twice)
 Hitting % n/a
 Blocks 1 (8/31 vs. Western Ill.)
 Digs 1 (9/7 vs. Weber State)
 Aces n/a
 Assists n/a

Career Highs

Kills same
 Attempts same
 Hitting % same
 Blocks same
 Digs same
 Aces same
 Assists same